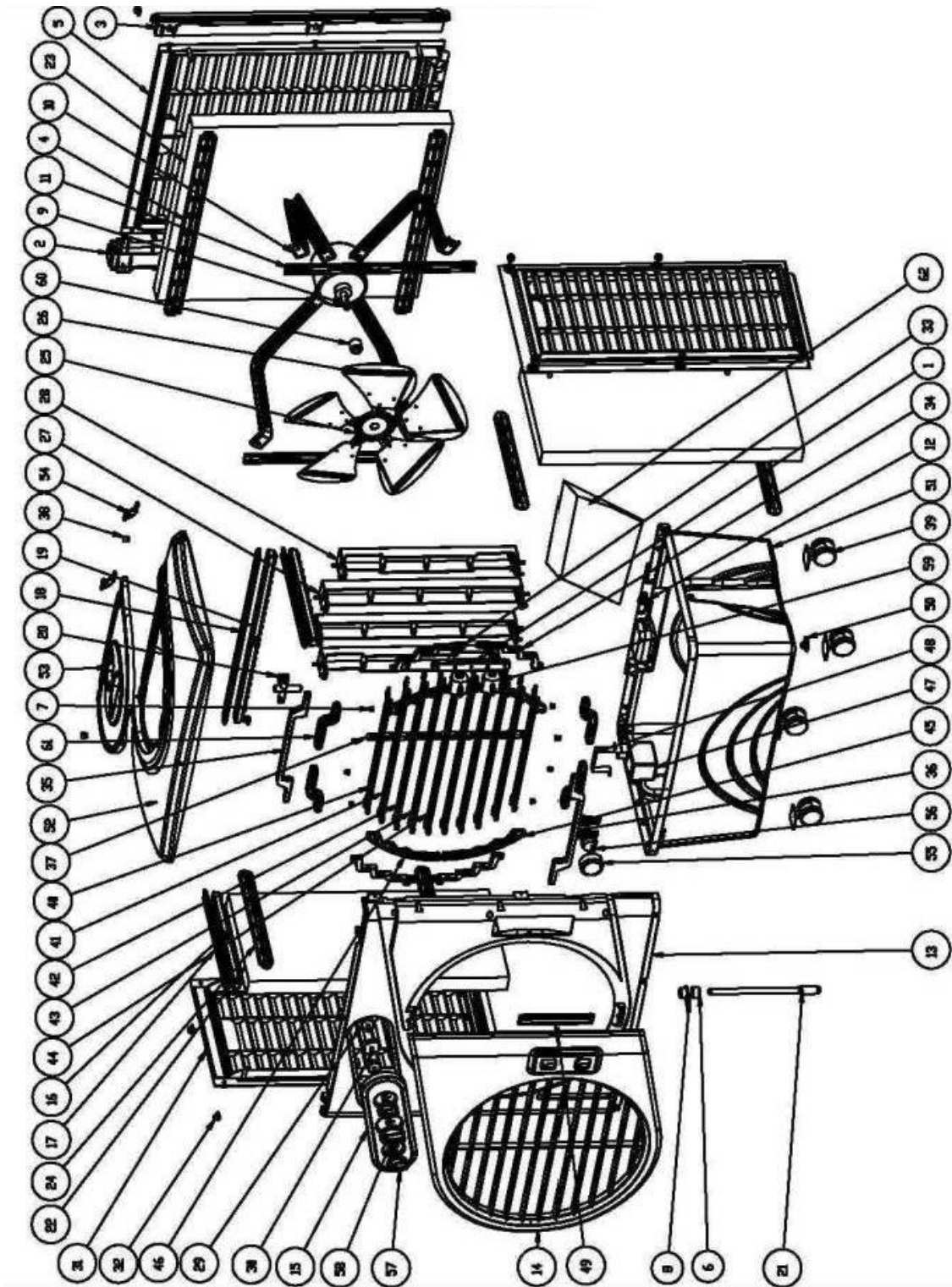


## 5. EXPLODED VIEW



# REPLACEMENT PARTS LIST

## 1.1 PE10 Parts List:

<u>Location No.:</u>	<u>Part Description:</u>	<u>Qty.:</u>
CL60PM-01	Swing button holder	1
CL60PM-02	Left support sheet	1
CL60PM-03	Right support sheet	1
CL60PM-04	Rear pad holder	2
CL60PM-05	Rear cover	1
CL60PM-06	Float tube sheath	1
CL60PM-07	Louver axes sheath	27
CL60PM-08	Float tube support	1
CL60PM-09	Main motor	1
CL60PM-10	Motor support	4
CL60PM-11	Motor support base	2
CL60PM-12	Float valve	1
CL60PM-13	Front cover	1
CL60PM-14	Ornamental panel	1
CL60PM-15	Control panel	1
CL60PM-16	Distribution water slot-1	2
CL60PM-17	Distribution water slot cover-1	2
CL60PM-18	Distribution water slot cover-2	1
CL60PM-19	Distribution water slot-2	1
CL60PM-20	Distribution water tube	1
CL60PM-21	Float tube	1
CL60PM-22	Side pad	2
CL60PM-23	Rear pad	1
CL60PM-24	Pad holder	4
CL60PM-25	Blower base	1
CL60PM-26	Blower	5
CL60PM-27	Vertical louver-1	2
CL60PM-28	Vertical louver-2	2
CL60PM-29	Switch for cool / swing knob	2
CL60PM-30	Switch for speed knob	1
CL60PM-31	Left side panel	2
CL60PM-32	Screw	12
CL60PM-33	Horizontal louver connector (Upper)	2
CL60PM-34	Horizontal louver connector (Lower)	2
CL60PM-35	Vertical louver connector	1
CL60PM-36	Vertical louver driver	1
CL60PM-37	Horizontal louver connector (Middle)	1
CL60PM-38	Screw plug	2
CL60PM-39	castor	4
CL60PM-40	Horizontal louver 1	2
CL60PM-41	Horizontal louver 2	2
CL60PM-42	Horizontal louver 3	2
CL60PM-43	Horizontal louver 4	2
CL60PM-44	Horizontal louver 5	2
CL60PM-45	Horizontal base (Left)	2
CL60PM-46	Horizontal base (Right)	2
CL60PM-47	Water pump	1

CL60PM-48	Water pump holder	1
CL60PM-49	Water level display window	1
CL60PM-50	Drain plug	1
CL60PM-51	Water tank	1
CL60PM-52	Top cover	1
CL60PM-53	Top compartment fill door	1
CL60PM-54	Top compartment connector	2
CL60PM-55	Synchronous motor	1
CL60PM-56	Off center blower wheel	1
CL60PM-57	Knob for swing / cool	1
CL60PM-58	Knob for speed	1
CL60PM-59	Swing button	2
CL60PM-60	Axes sheath	1
CL60PM-61	Vertical louver base-1	4
CL60PM-62	Vertical louver base-2	4