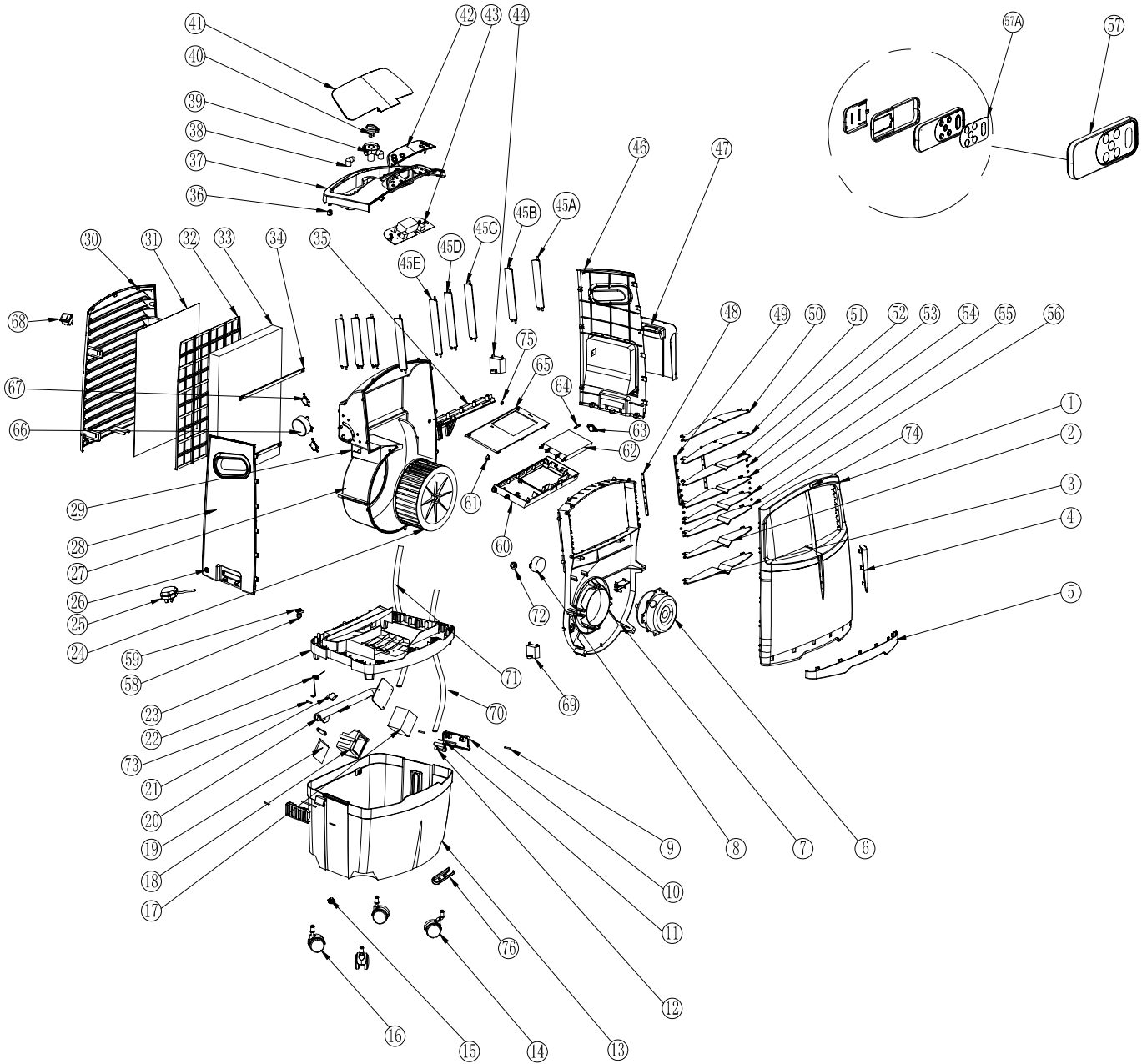


# 9142420 CHL30XC UK 220-240V 50Hz Exploded View

Release date: Nov.21.2013



Sr.	ERP PART CODE	PART NAME	CHINESE	QTY
1	2106251	Front panel	前面板ACP30H-01(防火)	1
2	2106267	Horizontal louver 7	前风叶7 ACP30H-01-04-07A(防火)	1
3	2106268	Horizontal louver 8	前风叶8 ACP30H-01-04-08A(防火)	1
4	2106020	Fume cover	香熏盖ACP30A-01-02	1
5	2106021	Decoration part	前装饰板ACP30A-01-03	1
6	2401502	Fan motor	电机总成ACP30H-70-28	1
7	2106244	Blower housing base	风机底板ACP30H-06-01(防火)	1
8	2206042	Swing motor	同步电机ACP30A-51-02	1
9	2325080	Short pin	短扣手连轴ACP30A-03-05	4
10	2106043	Latch	扣手ACP30A-03-02	2
11	2325079	Long pin	长扣手连轴ACP30A-03-04	2
12	2106044	Latch link	扣手连扣ACP30A-03-03	2
13	2106071	Water tank	水箱总成ACP30A-12-01-00	1
14	2106280	Front caster	前脚轮ACP30H-12-03A	2
15	2106105	Drainage plug	水箱胶塞ACP30A-12-02-05	1
16	2325416	Back caster	后脚轮ACP30A-12-04B	2
17	2206049	Water pump	水泵ACP30A-52-01	1
18	2106068	Pump box	水泵盒ACP30A-11-05-01	1
19	2325087	Sponge washer	海棉垫片ACP30A-11-07	1
20	2106063	Pump arm	水泵摇臂ACP30A-11-02-01	1
21	2106194	Wire holder A	水管压板ACP30H-07-03	1
22	2325084	Pump arm spring	摇臂缓冲弹簧ACP30A-11-03-03	1
23	2106253	Base pan	底座ACP30H-11-01(防火)	1
24	2106077	Blower wheel	风轮ACP30A-06-09(供应商:长能)	1
25	2405219	Power cord	电源线ACP30H-20-70-05	1
26	2206036	Power cord ring	橡胶线卡ACP30A-21-27(RoHS)	1
27	2106193	Blower housing	风机涡壳ACP30H-07-01 (防火)	1
28	2106187	Left panel	左侧板ACP30H-03-01	1
29	2106248	Wiring box cover	接线盒盖ACP30H-07-02(防火)	1
30	2106249	Rear panel	后板ACP30H-08(防火)	1
31	2325082	Carbon filter	碳网ACP30A-09-04	1
32	2106060	Honeycomb partition	蜂窝护板ACP30A-09-01	1
33	2402987	Honeycomb cooling pad	蜂窝板ACP30A-09-03C(绿棱)	1
34	2106061	Honeycomb holder	蜂窝压条ACP30A-09-02	2
35	2106048	Vertical louver drive	内导风杆ACP30A-06-02	1
36	2106037	Top cover screw base	顶盖螺钉座ACP30A-02-01-03	3
37	2106240	Top cover	顶盖ACP30H-02-01-01(防火)	1
38	2106041	Water flow regulator tube	分水管ACP30A-02-04-03	2
39	2106039	Water flow regulator	分水器ACP30A-02-04-01	1
40	2106040	Water flow regulator knob	分水器盖ACP30A-02-04-02	1
41	2106241	Ice compartment lid	水槽盖ACP30H-02-02(防火)	1

42		IMD control panel	IMD控制面板ACP30H-01-10-06	1
43		Main PCBA	ACP30H-70-04 LCD主控制器总成	1
44	2206173	Motor starting capacitor(P2)	6uF电容ACP30H-70-26	1
45A	2106271	Vertical louver 1	内风叶1 ACP30H-06-04A(防火)	2
45B	2106272	Vertical louver 2	内风叶2 ACP30H-06-05A(防火)	2
45C	2106273	Vertical louver 3	内风叶3 ACP30H-06-06A(防火)	2
45D	2106274	Vertical louver 4	内风叶4 ACP30H-06-07A(防火)	2
45E	2106275	Vertical louver 5	内风叶5 ACP30H-06-08A(防火)	1
46	2106242	Right panel	右侧板ACP30H-04-01(防火)	1
47	2106243	Water fill door	导水板ACP30H-04-02(防火)	1
48	2106269	Horizontal louver link A	前风叶侧连杆ACP30H-01-04-09A(防火)	2
49	2106270	Horizontal louver link B	前风叶中连杆ACP30H-01-04-10A(防火)	1
50	2106261	Horizontal louver 1	前风叶1 ACP30H-01-04-01A(防火)	1
51	2106262	Horizontal louver 2	前风叶2 ACP30H-01-04-02A(防火)	1
52	2106263	Horizontal louver 3	前风叶3 ACP30H-01-04-03A(防火)	1
53	2106033	Rubber bush	前风叶套ACP30A-01-04-12	16
54	2106264	Horizontal Louver 4	前风叶4 ACP30H-01-04-04A(防火)	1
55	2106265	Horizontal Louver 5	前风叶5 ACP30H-01-04-05A(防火)	1
56	2106266	Horizontal Louver 6	前风叶6 ACP30H-01-04-06A(防火)	1
57	5030287	Remote control assembly	ACP30A-21F-12遥控器组件	1
57A		Remote control sticker	PVC控制面板ACP30H-01-11	1
58	2206009	Water level alarm	水位报警器ACP30A-21-07(RoHS)	1
59	2106202	Water level sensor bracket	浮子支架ACP30H-11-02-05(防火)	1
60	2106196	PTC box	PTC盒ACP30H-01-01A	1
61	2106198	Switch polr	触动旋钮ACP30H-01-03A	1
62	2206133	PTC heater	PTC总成ACP30H-70-15	1
63	2206136	Thermal sensor	温度控制器ACP30H-70-19	1
64	2206127	Fuse	温度保险丝ACP30H-70-09	1
65	2106197	PTC cover	PTC盒盖ACP30H-01-02A	1
66	2206130	PTC drive motor	PTC同步电机ACP30H-70-12	1
67	2206135	Micro switch	微动开关ACP30H-70-18	2
68	2206131	Power cut-off switch	电源开关ACP30H-70-13	1
69	2206137	motor speed control capacitor(P0)	8uF电容ACP30H-70-20	1
70	2101683	Suction pipe	Φ10*Φ13硅胶管	1
71	2101692	Discharge pipe	Φ12PC透明管	1
72	2106247	Swing motor wheel	同步电机盖ACP30H-06-11(防火)	1
73	2325083	pump lever shaft	摇臂轴ACP30A-11-02-02	1
74	2106032	RC receptor cover	接收器盖ACP30A-01-05	1
75	2106049	Vertical louver drive holder	导风杆盖板ACP30A-06-03	1
76	2106256	front caster cover	前脚轮盖ACP30H-12-03-01	2